

Location plan

Located at prime location of KATARA HILLS, **Pride City** is at just few minutes drive from Habibganj Railway Station, Inter state Bus Terminus, Shopping malls, Educational institutes, AIIMS and other important amenities.



perfect harmony with nature...

PROMOTERS



Sterling Contractors & Builders Pvt. Ltd.



DEVELOPER



**STERLING BALAJEE
MEGA VENTURES**

Pride City, Near Spring Valley,
Katara Hills, Bhopal M.P.
Tel.: 9300696100, 9303094901, 7489318981
E-mail: pridecity@hotmail.com

MEMBER



ARCHITECT



Design Avenues
Manoj Choubey
0755-2550200, 9303131754
www.design-avenues.com

the brand spa 9826253635



LIVE MORE

In a city where space is a luxury and compromise a necessity, one address will help you get more. **More time**, Made available by an address that puts you at the centre of every facet of a contemporary lifestyle. **More space**, So that you can live your dream and indulge your family with every comfort, while your children finally find the perfect spot to play in, not too far from watchful eyes.



WISH MORE

Wish more in **Pride City** with the well planned Club house, which is the jewel of the premises. From the ambience to the acoustics. From cosiness to comfort. It offers the latest and the best. Drown the day's tensions in the stream of friendly chatter. Options abound to adapt to a well equipped gymnasium that best suits you. Choose what inspires you the most. Refresh, revive, rejuvenate and recharge in great style. More to it, club house has Indoor games like TT, pool games, aerobic & yoga. Lounge area here offers excellent view of the greens, mini library, sit-out with sound system.





GET MORE

In this 5 acre pride City Phase-II in Katara hills prime location you get **3/4 BHK** extra luxurious duplex bungalows with international standard space management and elevation designs, overlooking the large and lush green gardens and well planned plantation to offer you a fresh and natural living. You'll get here the finer details of roomy interiors and state-of-the-art exterior. Yes, at **Pride City** you can wish for more. And have it come true.





layout plan



PRIDE-CITY PHASE-2

PLAN MORE

Pride City is campus of more than just homes. Our team of well experienced planners have created here a full length life style to enjoy. Every home is vastu based. All roads are concrete, wide and well planted both side. Common areas are well lit. Electric supply is underground. Rain water harvesting system is designed very well. Multiple sit outs across the campus.



ENJOY MORE

Other than the spacious kitchen, roomy bedrooms, airy drawing room, enjoy in big size balcony from where you can look at the world below and feel elated. Or look up at the clouds, the rainbow and the moon... and feel humbled. Here's something for those with a different point of view. For few, its where they make friends with the sparrows, read a book and gaze at the stars.



PRIDE CITY PHASE - 2

PRIDE CITY PHASE - 1



layout plan



PROUD MAKERS OF PRIDE CITY

Sterling Contractors and Builders Pvt. Ltd. is a name to reckon with in the real estate development in the city of Bhopal. Sterling has been in the construction industry for last 5 decades and diversified into Real Estate Development in 1996. Since then Sterling has delivered many residential milestones to the city of Bhopal. Value for money and high return on investments has been the motto for Sterling all through.

Balajee Associates is a well-known name in Bhopal and is promoted by Bharat Pictures Ltd. (Owners of Bhopal & Bharat Cinema Halls), which has their existence for the last 5 decades in the entertainment industry. The Group is also involved in real estate development for last 12 years and has completed projects successfully.

Globes Realty is in the field of real state since 1996 and in construction industry since 2006 and has carried out various projects.

Sterling, Balajee Associates and **Globes Realty** are an embodiment of tremendous talent and imaginative innovations. The group exhibits a fresh approach to the real estate developments. Above all, Sterling Builders & its associates have always maintained focus on integrity, customer delight and commitment to deliver. The real estate projects by Sterling and its allies offer you more choice in terms of location, design, budget and is the best choice when it comes to perfect investment in real estate.



our on going projects



A colony of 186 luxurious apartments



A premium colony residential plots spread over 22.75 acres



A commercial business centre having built up area of over 6.50 lac sqft



A campus of lifestyle apartments spread over 3.11 acres

Specifications

STRUCTURE

Earthquake resistant R.C.C. Frame Structure design.

BRICK WORK

Using Good quality bricks.

FLOORING

Vitrified tiles in all rooms. Anti-skid tiles in porch, backyard, balcony & toilets.

FINISHING

Internal walls- Interior emulsion.
Exterior walls- Exterior emulsion.

POP

POP Cornices in all rooms.

KITCHEN

Granite platform with steel Sink, glazed tiles in Dado upto 2' height above the platform.

DOORS

Steel frame with excellent quality doors.

WINDOWS

Powder coated aluminum windows with M.S. grills.

TOILETS

Concept based wall tiles upto 7' height, Anti skid tile on floor, Sanitary fittings of standard make, chromium plated bathroom fittings.

ELECTRICAL

Concealed Copper Wiring with concealed pts. for TV & Telephone, MCBs, modular Switches, One AC point in all bedrooms.

WATER TANK

1000 Ltr. 3BHK, 1500 Ltr. 4 BHK.

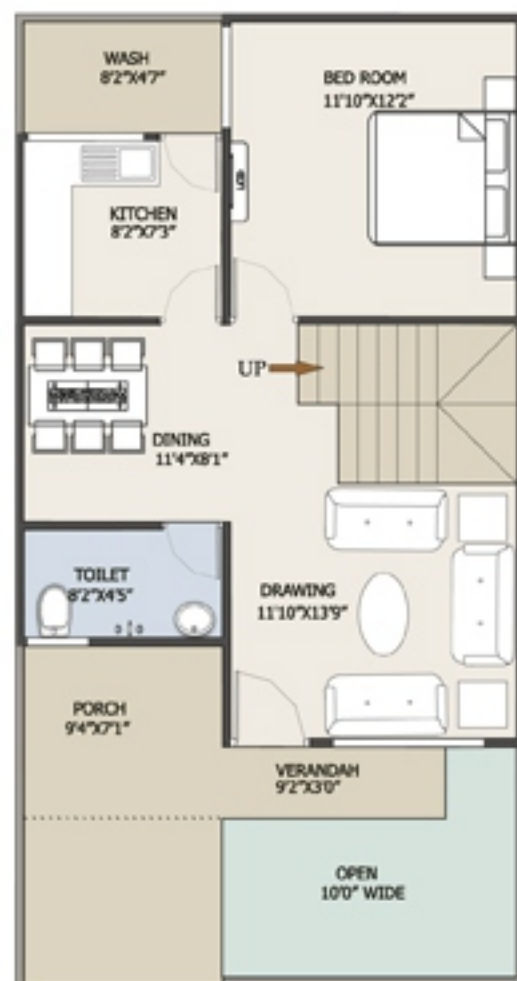
INVERTER WIRING

In all apartments & Duplex houses

Amenities

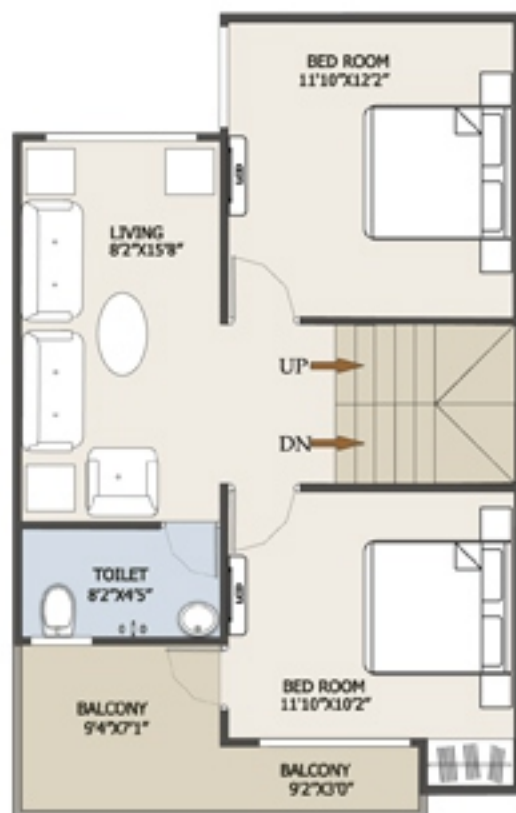
- Beautiful main entrance Foyer with round the clock security arrangement.
- Vastu based campus layout.
- Club House having all modern amenities like gymnasium, pool table, table tennis, etc.
- Jogging / walking track.
- Beautifully Landscaped Gardens & Children Play areas.
- Community hall within Club House.
- Well lit public/ common areas.
- Adequate water supply through sump-well / bore wells.

- A well-developed secured campus.
- Multiple sit-outs across the campus.
- Underground electrical & telephone cabling.
- Efficient sewage treatment & disposal system.
- Well designed rain water harvesting system.
- Cement concrete roads throughout the campus.
- Loan facility by leading Banks.
- Project Very near to AIIMS.



TYPE D

PLOT SIZE 21'0"X40'0"



TYPE E

PLOT SIZE 23'0"X45'0"



TYPE F

PLOT SIZE 23'0"X42'8"

